

History, stories, characters... Let yourself be enchanted by Valdinievole

From the hills around **Montalbano**, near Vinci, to the ancient hamlet of **Collodi**, **Valdinievole** looks after its stories and ideas, and after the people who were born in the region and who then set off from here to conquer the world. From **Leonardo da Vinci** to **Pinocchio**, but not only.

Begin to discover the gently sloping hills of this area, which, step by step, will fill you with emotions and unforgettable memories. Taste, art, culture and nature will guide you in this fascinating journey, in this most authentic part of Tuscany.

And even kids will be able to discover, to get to know and to learn, while having great fun at the same time. The **Park of Pinocchio** will be a leap into the fable written by Carlo Collodi, a close range meeting with the most famous puppet in the world, an experience you should prepare yourself for by first reading 'The Adventures of Pinocchio'. Then go on to find the stories, characters and episodes of the book in the works of famous artists who have adorned the monumental park.

Just visiting one of Valdinievole's many museums will mean that your curiosity and imagination will be stimulated, and not only that of the kids. From the **Museum of Paper in Pietrabuona**, to the **Museum of the City and its Territory in Monsummano Terme** right up to the **Civic Museum in Larciano**... this way you can deepen your knowledge of the history and traditions of Valdinievole.

Tuscany



Valdinievole

Valdinievole Tourism is the association of:



Comune di Buggiano



Comune di Chiesina Uzzanese



Comune di Lamporecchio



Comune di Larciano



Comune di Massa e Cozzile



Comune di Monsummano Terme



Comune di Montecatini Terme



Comune di Pescia



Comune di Pieve a Nievole



Comune di Ponte Buggianese



Comune di Uzzano

Tourist Information and Welcome Service

Tourist Office of Montecatini Terme

Info:

Tel: +39 0572 918226/298/227

www.valdinievoleturismo.it

With the patronage of



Regione Toscana



A fairy-tale world

The museums scattered around Valdinievole: the **Park of Pinocchio**, the **Villa Garzoni at Collodi**, the **Museum of Paper**. Let yourself be enchanted by the fascination of their stories.

www.valdinievoleturismo.it

Emilio Greco, Pinocchio e la fata (1956), at Park of Pinocchio



petipros.com

VISITTUSCANY

5.

IDEAS

A FAIRY-TALE WORLD



Trekking under the village of Collodi



The museums scattered around Valdinievole

Valdinievole is the home of the world's most famous puppet and in Collodi - a tiny village near Pescia - lies the **Park of Pinocchio**, dedicated to him and to his author, **Carlo Lorenzini**. It is not just a simple amusement park but rather, it is the place where much loved characters come to life, in a warm embrace between nature and art. A journey through literature, imagination and intelligence: all you have to do to enter the fable is to go through the Monumental Park's gate.

Pinocchio's Park is created like a surprise journey. It begins with two works that sum up the significance of the story of Pinocchio: the **'Pinocchio and the Fairy'** Monument by **Emilio Greco** and the **'Piazzetta of Mosaics'** by **Venturino Venturi**. It is a journey of stages, with 21 sculptures, buildings, green spaces where adults and kids can interact in order to retell the adventures of Pinocchio by means of works by important 20th century artists,



THE GARZONI VILLA AND GARDEN

The Villa and its garden, built by the **Garzoni family**, are an extraordinary example of the taste and of the **Tuscan culture in the 18th century**. Also called the Villa of the Hundred Windows, it stands out due to its elevated position overlooking the surrounding countryside. The splendid garden, also standing on a slope, is an example of late Baroque art, rich in watergames and scenographic features.

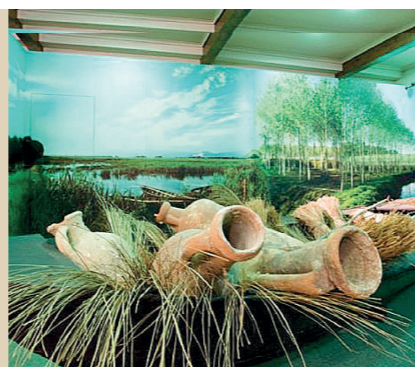


THE HISTORICAL CENTRE OF PESCIA

Divided into 4 districts, Ferraia, San Francesco, Santa Maria and San Michele, which every year, in the month of September, challenge each other in the **'Palio dei Rioni'** (an archery contest dating back to the 14th century), Pescia is a city rich in ancient traditions and beauty.

such as the sculptures of **Pietro Consagra** and the Great Whale by **Marco Zanuso**. The journey continues to the **Museum of the Cricket** that holds exhibitions dedicated to Pinocchio, and to the **Virtual Library** where you can consult - by interactive touch screens - texts and illustrations from editions of the book from all over the world. Immersed in Valdinievole's nature, the Park also offers two adventure trails for younger children: **'Vola sul Fiume'** - Fly over the River - and the **'Nave Corsara'** - the Corsair Boat - so that they can, in total safety, test themselves by playing with tree trunks, planks, boards and suspended rope bridges; and the **Butterfly House** where hundreds of tropical and equatorial butterflies are free to fly in a luxuriant green garden.

Then on to **Collodi**, a little village lying on the side of the hill - between the Ancient Rock and the majestic **Villa Garzoni** - with its stone and cobbled pavings that reminds you of its medieval past. The historical villa once belonged to the aristocratic **Garzoni family** and it still stands proudly out against its background, overlooking the surrounding countryside. The **18th century garden** is quite magnificent, this



MUSEUM OF THE CITY AND OF THE MONSUMMANO TERRITORY

Geology, archaeology, sacred art, history of the reclamation of the **Fucecchio Marshland**: these are some of the sections of the Museum of the City and of the Monsummano territory. Housed in the old **'Osteria dei Pellegrini'** - the Tavern of the Pilgrims - it welcomed wayfarers who passed by on their way to venerate the **Madonna della Fontenuova**, and it is like a mirror that reflects the soul of the Valdinievole community and its history.



THE CIVIC MUSEUM OF LARCIANO

In the ancient bridgehouse of the Castle of Larciano, the Civic Museum holds archaeological findings of both local and national provenance, such as kitchen pottery, metal objects, polychrome majolicas, clay bricks, parts of floorings, cremation tombs. The educational section recreates, by means of objects of daily use, a glimpse of life in the past.

too is on a slope with terraces, statues, fountains and the scenographic stairway, which all make it one of the loveliest gardens of its time.

Close to Collodi, on both sides of the River **Pescia**, the town of the same name is a compulsory stage of your journey in this corner of the Valdinievole, where its historical centre, with its elegant palazzi, holds works of **Libero Andreotti** in the **Plaster Cast Gallery**.



To the north of Pescia, is the **Valleriana** area, also called the **'Svizzera Pesciatina'**: this name was given it by a Swiss gentleman, **Sismondi** from Geneva, at the end of the 18th century because it reminded him of Switzerland.

Pietrabuona is the first of the ten **'Castella'**, small hamlets all built in pietra serena, that still preserve, unchanged, their original charm. **The Museum of Paper** stands here as well, where the ancient art of handmade paper is still kept alive, an art going back to the 15th century.

Apart from holding exhibitions, the museum organizes educational laboratories which teach manufacturing techniques during which - by using copies of the original machinery - the participants can make a piece of paper by following the ancient techniques of master papermakers.



THE PARK OF PINOCCHIO, THE FIRST ART GARDEN IN TUSCANY

Tuscany is a region rich in art, and in its most recent examples of excellence, a large number of 'art gardens' stand out, present all over the area. However, Valdinievole comes first in one way: it created the very first art garden.

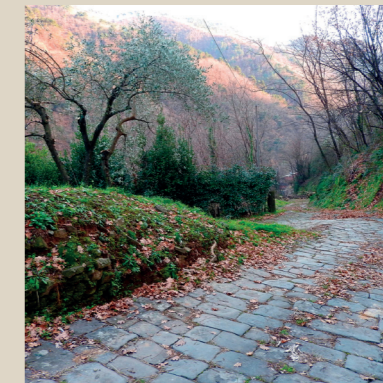
In 1953, on the seventieth anniversary of the publication of the fable of Pinocchio, the Mayor of Pescia, **Rolando Anzilotti**, announced a national contest for the realization of a monument to honour the world's most famous puppet.

Among the 165 projects submitted, the joint winners were the group of statues of **'Pinocchio and the Fairy'** by **Emilio Greco** and the **'Piazzetta of Mosaics'**, made by the sculptor **Venturino Venturi**.

Embellishing the monumental Park - opened in 1956 - are the sculptures of **Pietro Consagra**, **Augusto (Bobo) Piccoli**, and of the designer **Marco Zanuso**. **Giovanni Michelucci** was handed the project of the **'Osteria del Gambero Rosso'** - the Tavern of the Red Prawn - while **Pietro Porcinai** was given the task of the arrangement of the landscape and the choice of essences.

WE SUGGEST YOU
A FAIRY-TALE WORLD

The Road of the Paper



One of the ancient cobbled roads



The route goes through the forest



The Calamari paper mill

The opening of the **Museum of Paper in Pietrabuona** created the opportunity of bringing to life many projects designed to recuperate the historical, economic and social memory of the area, projects concerning the culture of work and business, to recover the identity of the places and to enhance the productive heritage.

One of these projects was the launching of a **network of paths going along the original paths of the master paperworkers, starting from Villa Basilica and arriving at Pescia**. Paths that are more or less demanding, to be travelled along on foot or by mountain bike, allowing the visitor to discover the area by using its ancient connecting roads which were used until halfway through the last century by the paper factory workers themselves - but most of all, by the female factory workers - to reach on foot or by mule-drawn wagon, their places of work. Some of these have names that are tied to their actual function, for example the **"Via delle fabbrichine"**, indicating the women who came down the hill to work in the historical paper factory of Magnani.

Some of these paths were used for religious purposes: propitiatory processions took place along these paths for the harvest, bringing relics and following fixed itineraries in different directions. The religious events and the village parties were really a chance for the inhabitants of the two valleys to meet up together and usually they took place along the crest. The eight paths recovered by the project **"The Road of the Paper in Tuscany"** wind over the hills for a total of 20 km. In just a few hours, you can go on a journey across the centuries, visiting a sort of museum spread over this area of archaeological industry in one of the most important paper centres in the world.